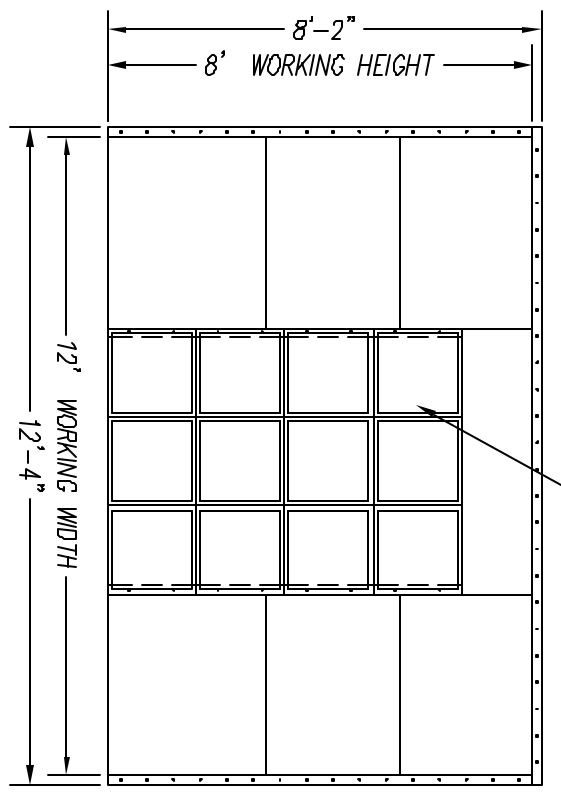
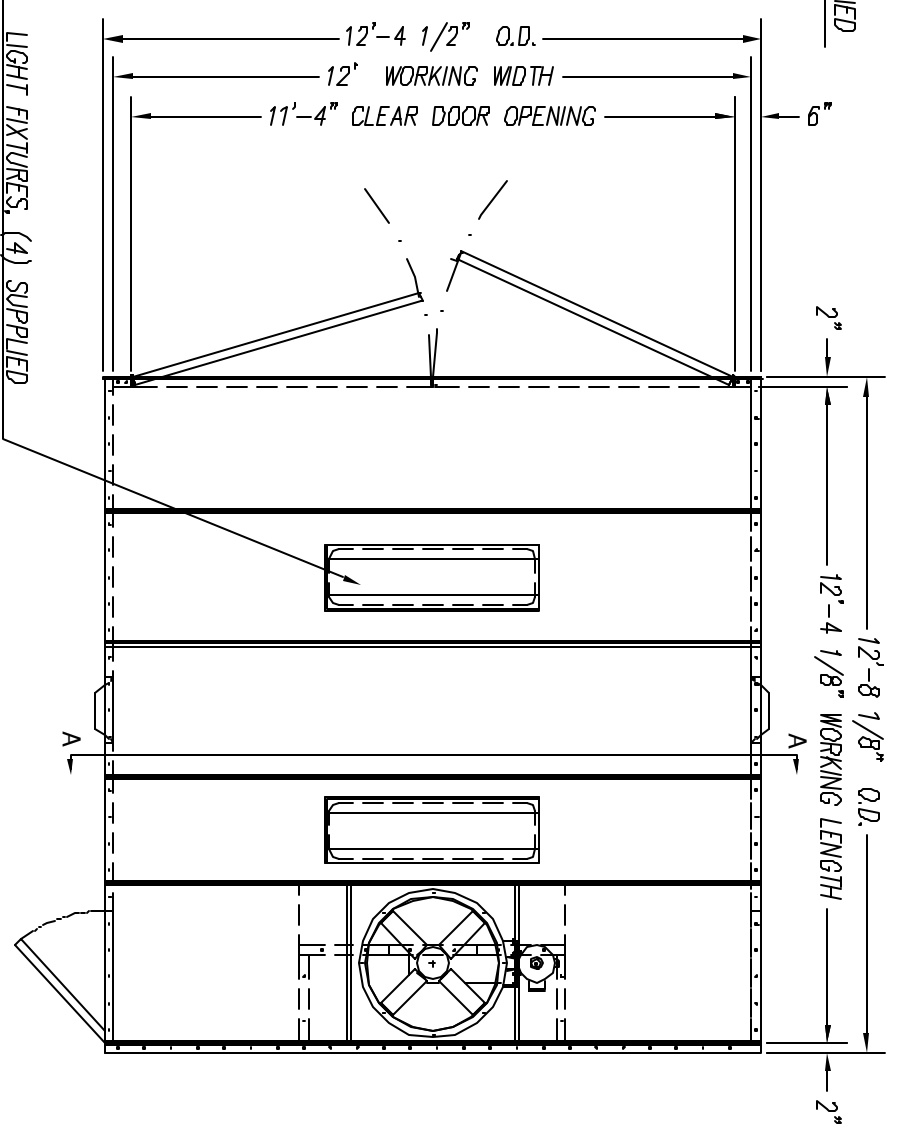


COL-MET SPRAY BOOTHS ARE MFG. IN ACCORDANCE WITH IFC-2000 SECTION 1504.1.2.1 THROUGH 1504.1.2.2, SECTION 1504.2.3, SECTION 1504.2.5, SECTION 1504.2.7, SECTION 1504.3, SECTION 1504.3.1, SECTION 1504.3.2, AND NFPA-33



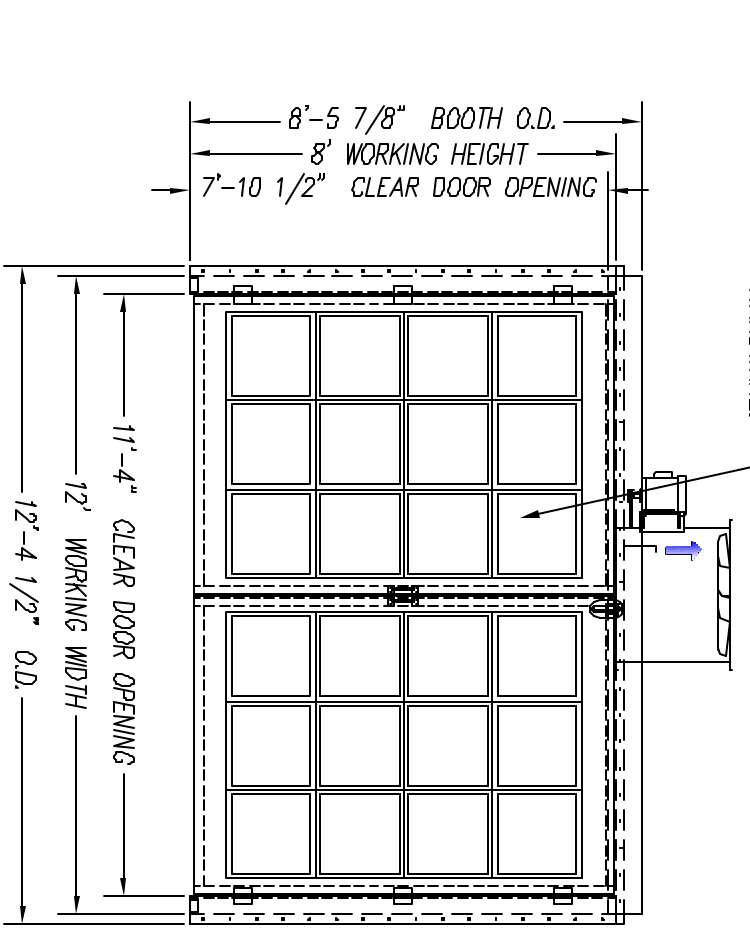
EXHAUST FILTERS, (20) SUPPLIED WITH GRIDS  
20" X 20" X 2" FILTERS



FOUR TUBE 48", 32 WATT FIXTURES MOUNTED BEHIND CLEAR TEMPERED GLASS PANES, "UL" RATED FOR THEIR INTENDED USE AND PLACEMENT, (4 OPEN TYPE) LIGHT FIXTURES, (4) SUPPLIED

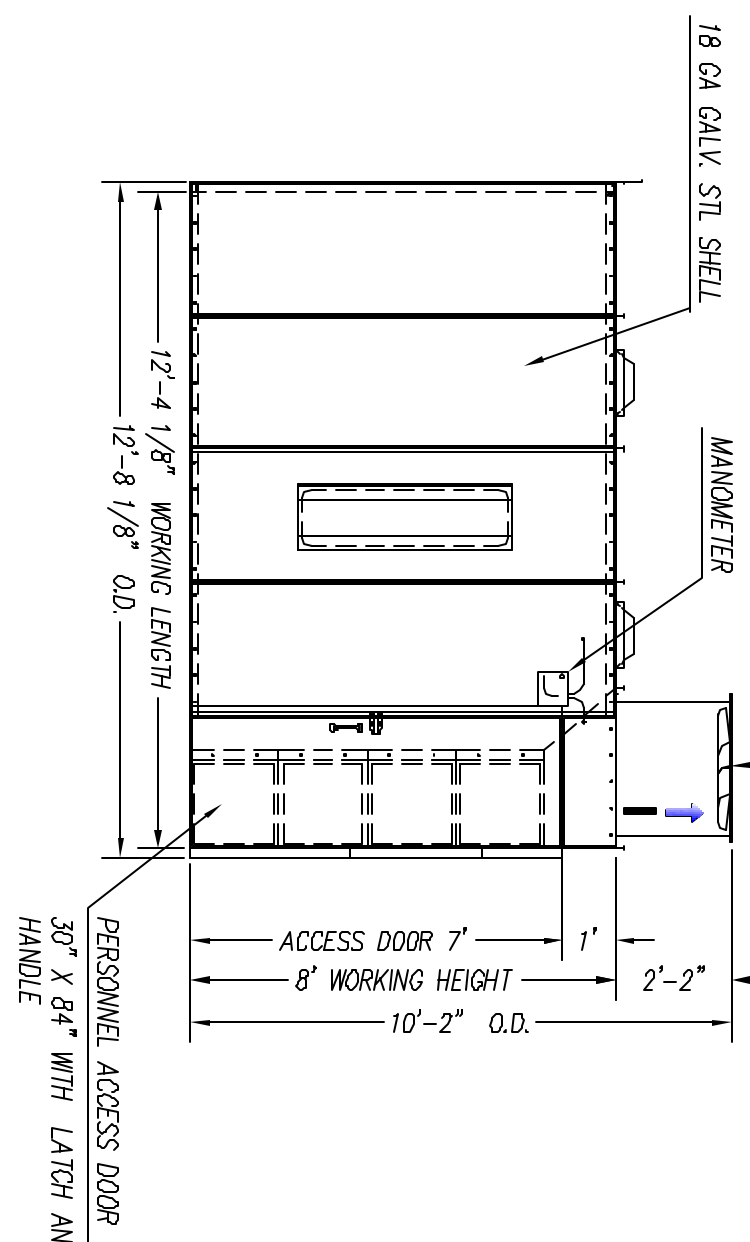
PLAN VIEW

30" DIA TUBEXIAL FAN UNIT RATED FOR 9,600 SCFM EXHAUST @ 1/2" SP, DRIVEN BY A 2 HP ODP TYPE MOTOR



FILTERED PRODUCT ENTRY DOORS EQUIPPED WITH 24 TACKY INTAKE FILTERS 20" X 20" X 1" PANIC LATCH, DOOR SWITCH, SWEEP SEAL AND HARDWARE.

END VIEW



SIDE ELEVATION

THE ASSEMBLY DRAWINGS YOU HAVE RECEIVED ARE IN A GENERAL REFERENCE. OPTIONAL ACCESSORIES MAY NOT BE SHOWN AS PROVIDED. PLEASE REFER TO YOUR PURCHASE ORDER FOR A COMPLETE DESCRIPTION OF YOUR BOOTH ORDER.

**APPROVAL DRAWING**

MANUFACTURING WILL AWAIT APPROVAL

END USER SIGNATURE: \_\_\_\_\_

MOTOR SUPPLY VOLTAGE: \_\_\_\_\_

LIGHT SUPPLY VOLTAGE: \_\_\_\_\_

PLEASE SIGN THE APPROVAL DRAWING, MAKE ANY NOTES TO DRAWING THAT MAY AFFECT ORDER. NOTE: ANY CHANGES TO DRAWING MAY EFFECT CHARGES, DELAY APPROVAL PROCESS AND DELAY THE PRODUCTION OF YOUR ORDER.

**VOLTAGE CONFIRMATION**

MOTOR 480/3/60 VAC  
LIGHTS 120/1/60 VAC  
IF DIFFERENT, INDICATE BELOW  
VAC (MOTOR)  
VAC (LIGHTS)

**GENERAL NOTES:**

1. WORK CHAMBER WILL BE BOLTED CONSTRUCTION WITH 6/16" BOLTS ON STANDARD CENTER. COLLECTOR WILL BE WELDED CONSTRUCTION.
2. WORK CHAMBER TO BE 18 GA. GALVANIZED UNPAINTED SHEET METAL.
3. ALL MOTOR CONTROLS SWITCHES, LIGHT LAMPS OR TUBES, INCLUDING CONNECTIONS TO EQUIPMENT TO BE FURNISHED AND INSTALLED BY CUSTOMER EXCEPT AS NOTED.
4. MAKE AIR WALKER AND AIR SPACE WITHIN FRONT OF BOOTH MUST BE PROVIDED IN ORDER TO INSURE PROPER OPERATION OF BOOTH.
5. ALL LOCAL, CITY & STATE PERMITS AND INSURANCE APPROVAL TO BE OBTAINED BY CUSTOMER.
6. CUSTOMER TO FURNISH: ROOF-FITCH IF REQUIRED.

**COL-MET**  
Spray booths

EIE 1208 3-VIEW APPROVAL

DATE: 12/8/05	PW
DESIGNED BY: _____	CHECKED BY: _____
DRAWN BY: _____	DATE: _____
SCALE: NTS	1 OF 1